

CASA PANORÁMICA

○

CASA DE LA CURVA

COVETA FUMÁ
ALICANTE



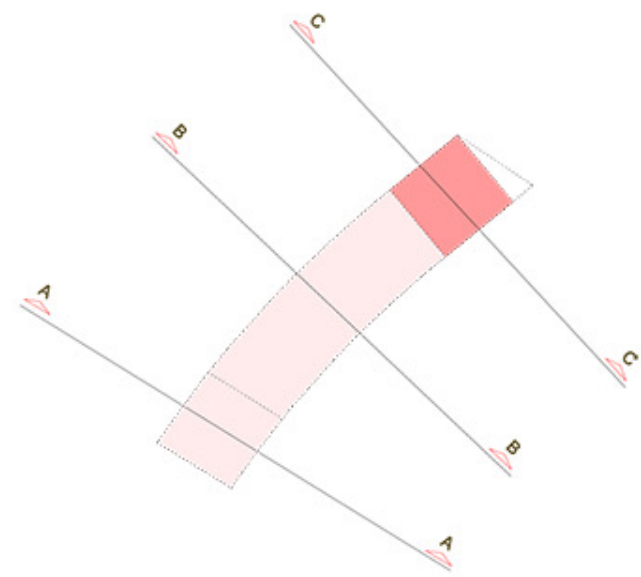
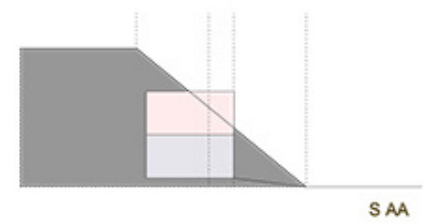
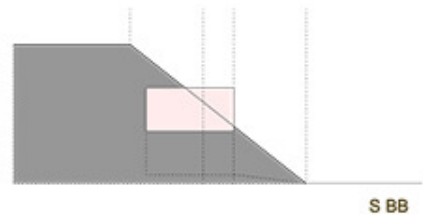
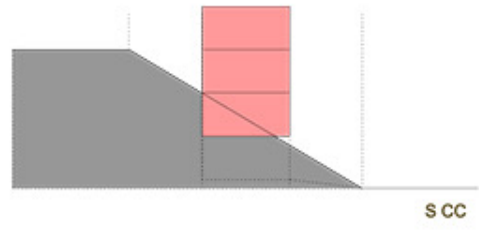




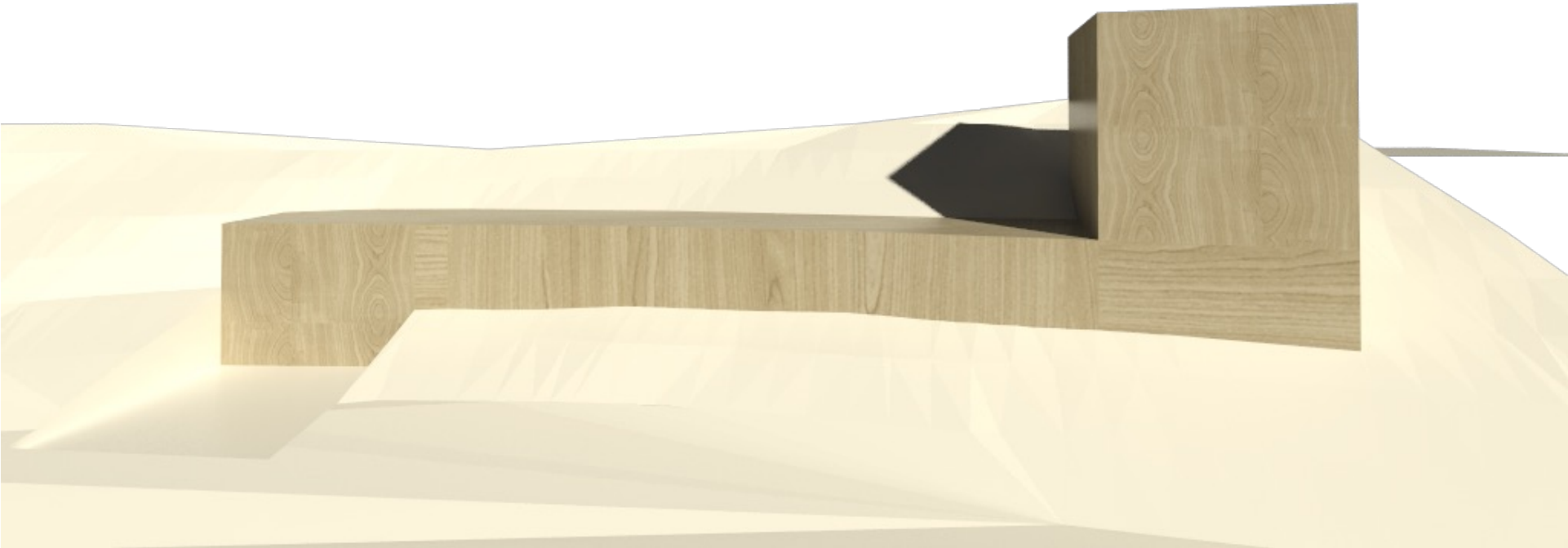


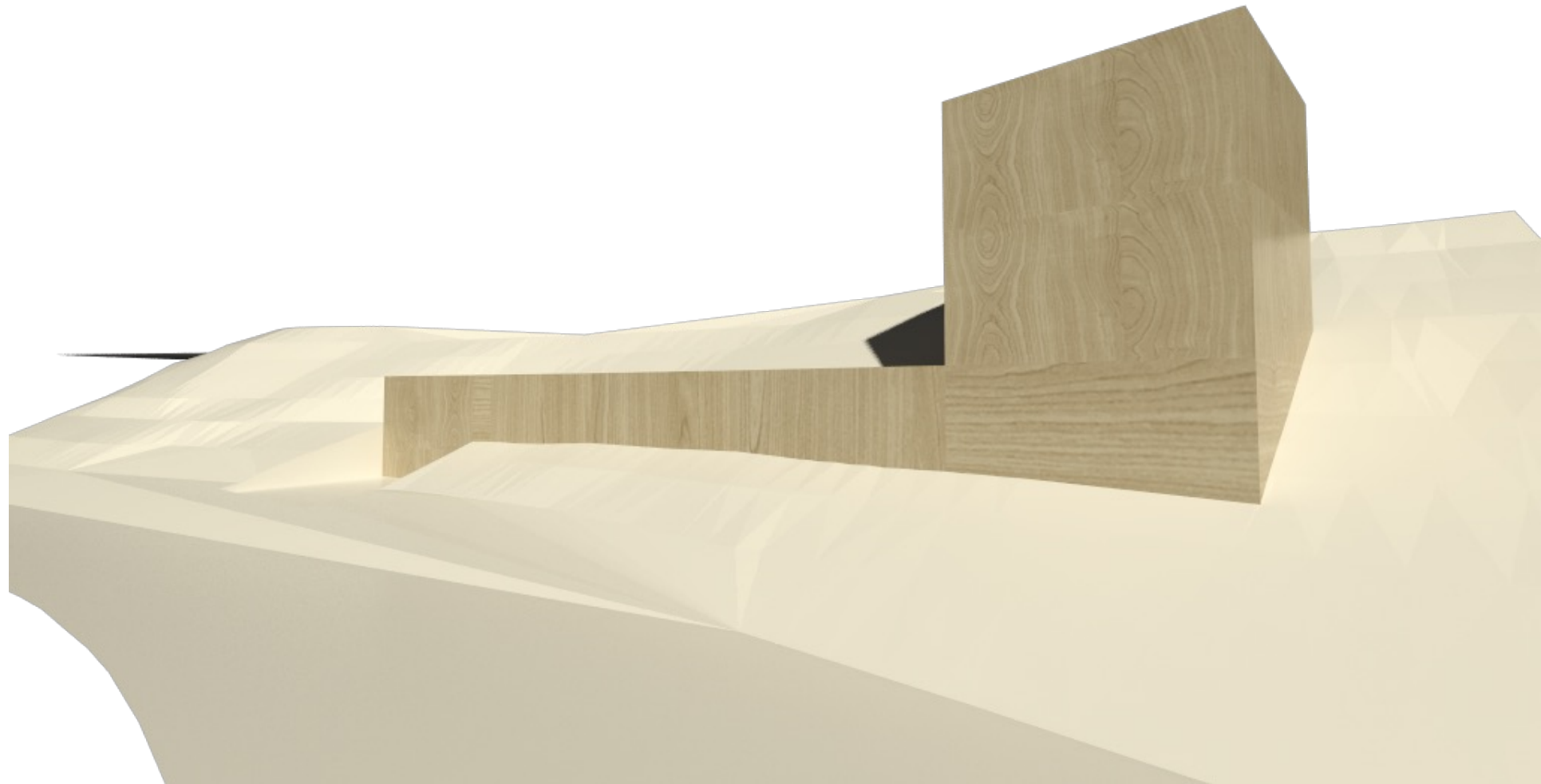




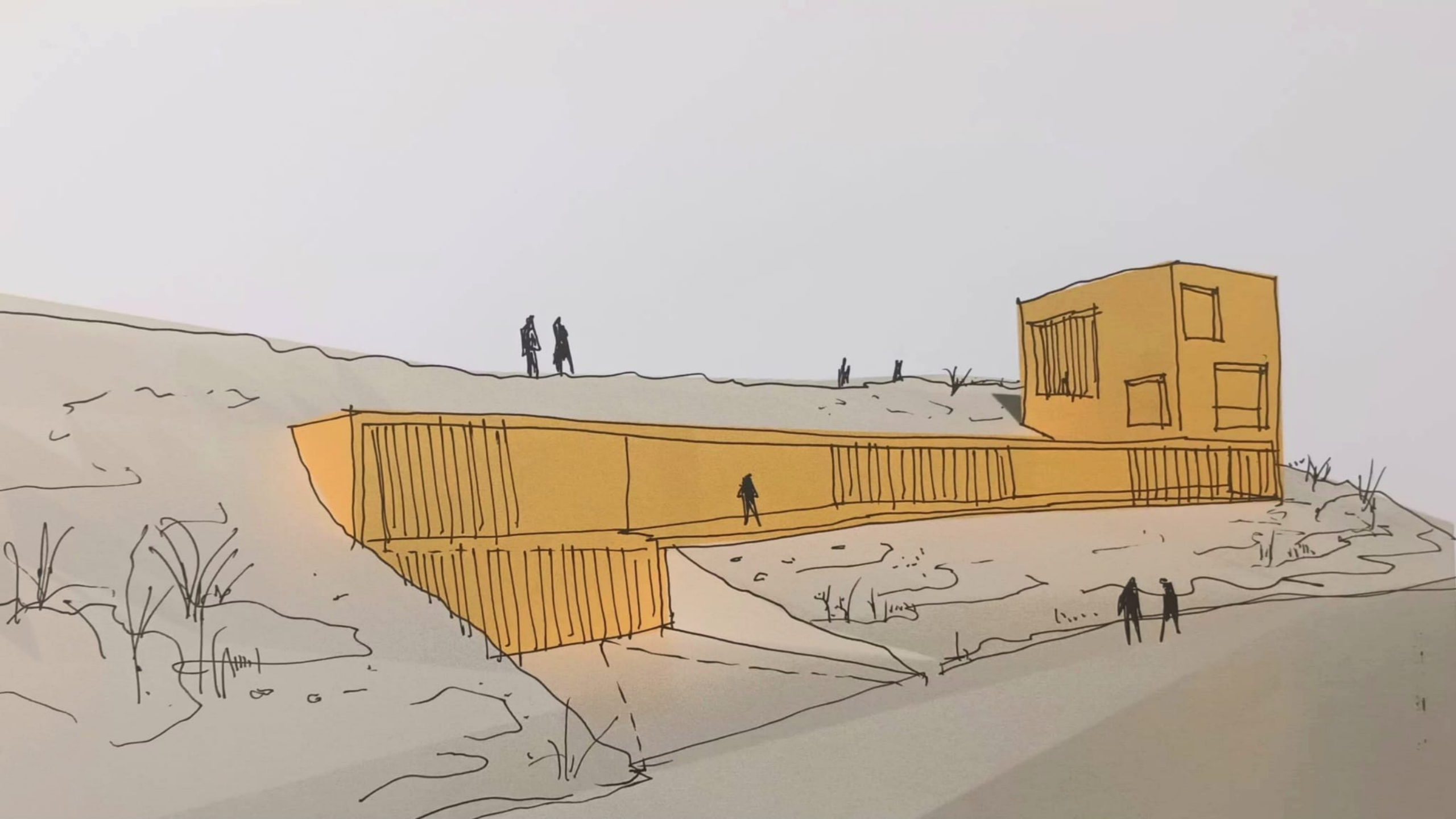


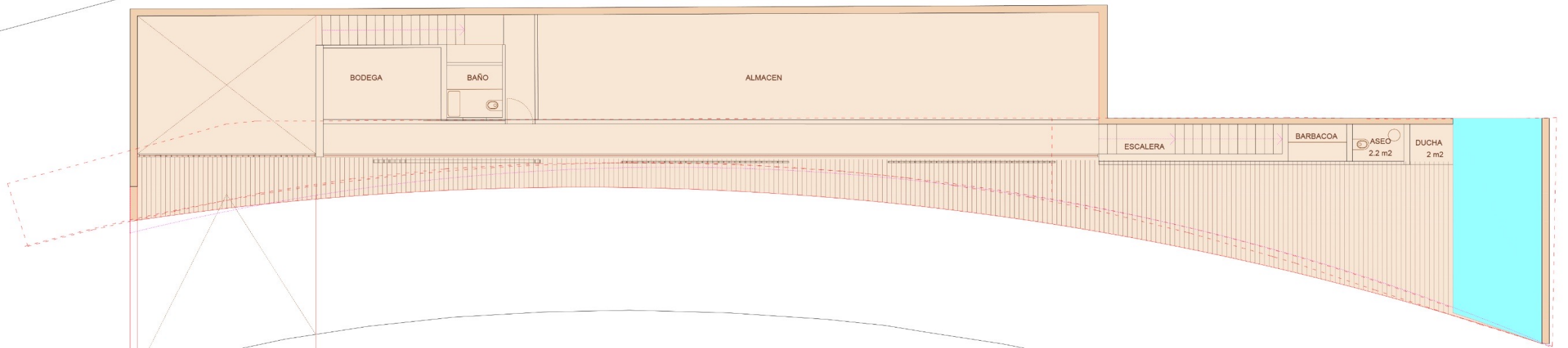
- PB+2
- SEMI ENTERRADA
- SÓTANO



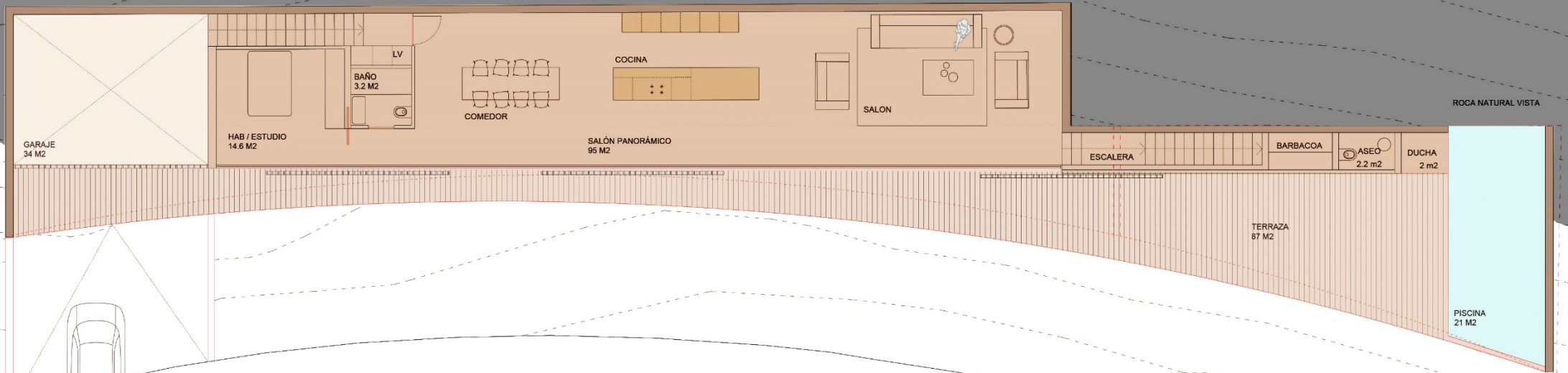








PLANTA BAJA NORMATIVA
130 m²



ROCA NATURAL VISTA

GARAJE
34 M²

HAB / ESTUDIO
14.6 M²

BARO
3.2 M²

COMEDOR

COCINA

SALÓN PANORÁMICO
95 M²

SALON

ESCALERA

BARBACOA

ASEO
2.2 m²

DUCHA
2 m²

TERRAZA
87 M²

PISCINA
21 M²

PLANTA BAJA
180 m²





+12.18

+9.12

+6.05

+3.12

-0.55





+12.18

+9.12

+6.05

+3.12

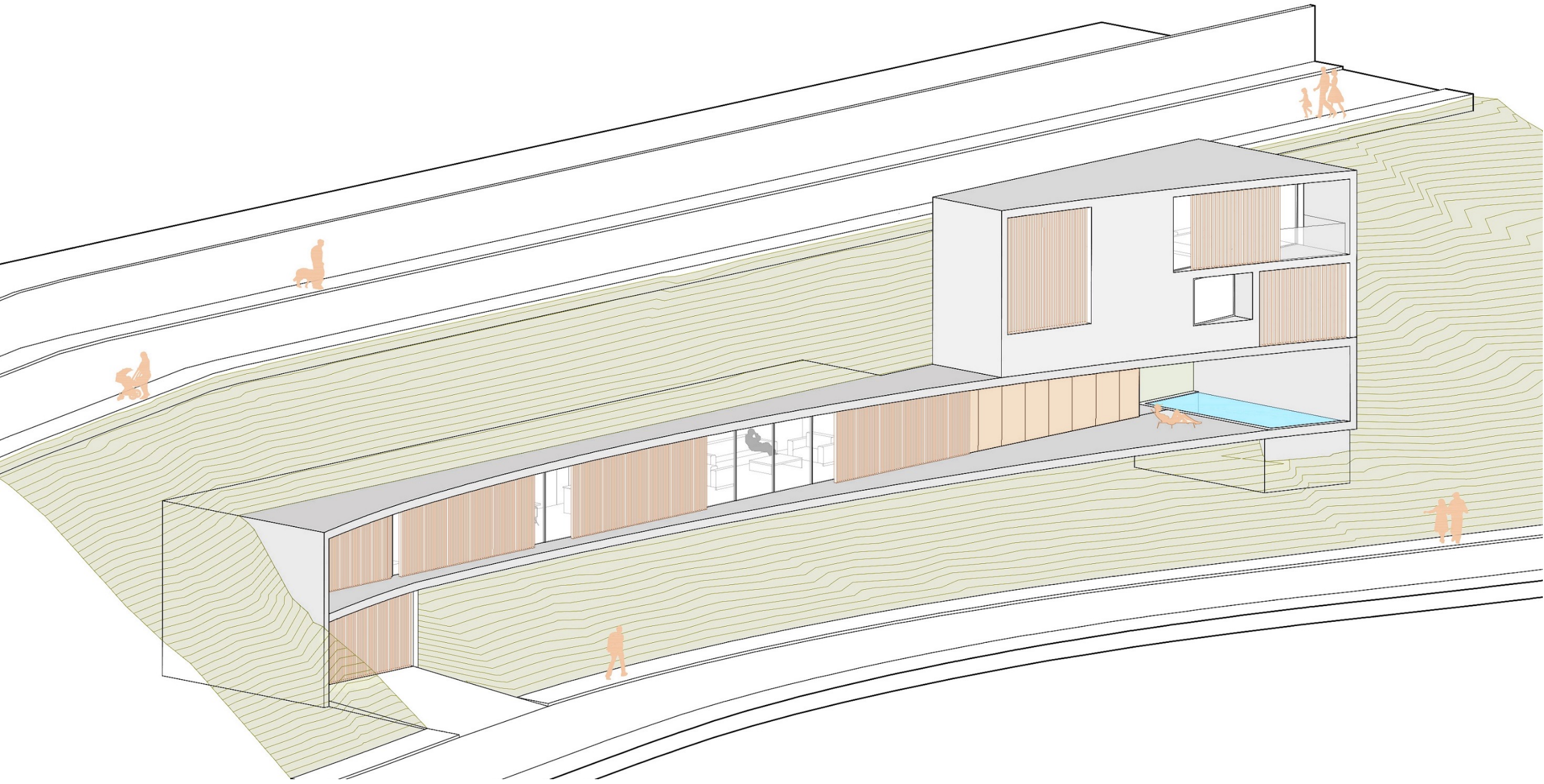
-0.55















x subarquitectura